

MS Amelia ★★★★ superior

Year of construction:	2012
Length:	135.00 m
Width:	11.45 m
Draft:	1.60 m
Engines:	2130 hp
Crew:	45 persons
Passengers:	220 persons
Voltage:	220 Volt
Flag:	Switzerland



The MS AMELIA is already the 2nd ship of a new generation. As its sister ship – the MS ALINA - the MS AMELIA is revolutionizing the river cruising industry – in terms of size as well as concept.

Endowment:

An impressive atrium in the entrance hall welcomes guests onboard. The interior decoration is characterized by fashionable design throughout, which nevertheless does not deny the famous and popular SCYLLA-style.

As on the MS ALINA, the MS AMELIA also has two restaurants which offer flexibility and the choice between buffet and à la carte. Furthermore, a fitness and wellness area with the latest equipment is provided.

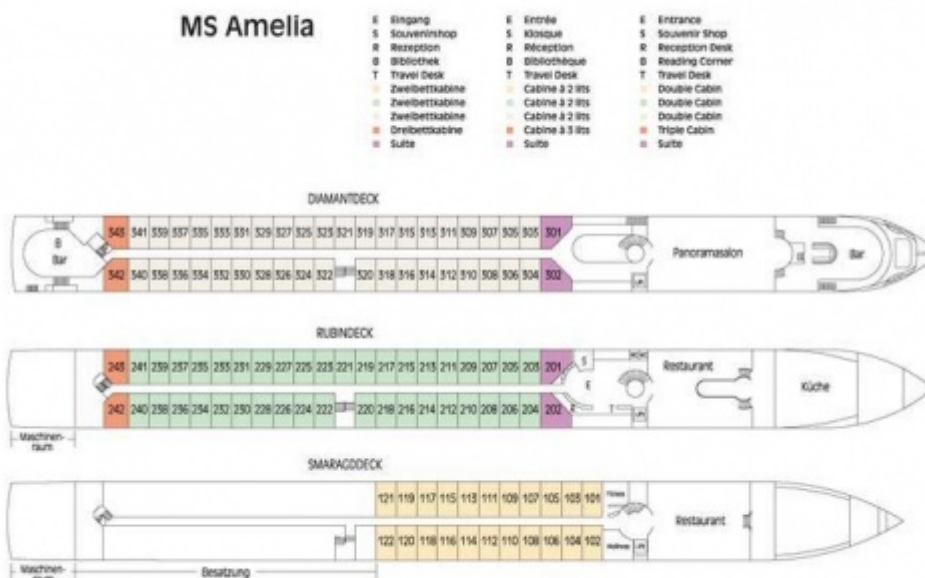
Elsewhere onboard the MS AMELIA offers a lounge with a bar and dance floor, a comfortable Lido bar with a terrace, a boutique, a travel desk, an Internet corner, a spacious sun deck with a whirlpool, sunbeds, a putting green and shuffle board. Furthermore, a lift is provided.

Cabins:

All of the 108 cabins are outward-facing, with panoramic windows or French balconies. State-of-the-art equipment in combination with modern design creates a unique atmosphere.

All cabins are fully equipped, providing a flat-screen TV, radio, minibar, safe, hair dryer, air conditioning, shower and WC.

Deck plan:





Restaurant



Salon / Lounge



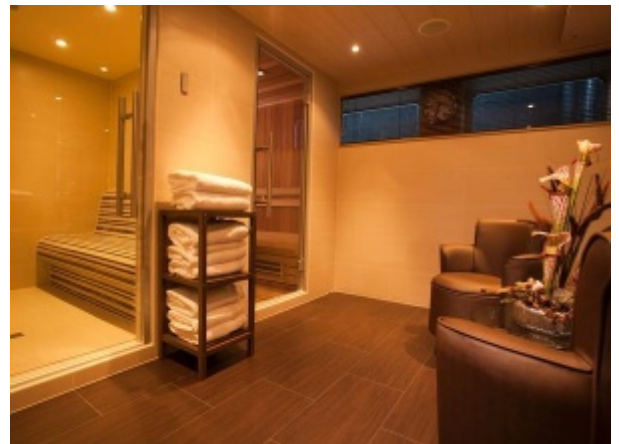
Doppelkabine / Double cabin



Suite



Restaurant



Wellness